



User's Manual

Version 2.0

Table of Contents

Ch1. TeVii Product Introduction.....	2
1-1 Introduction	2
1-2 Feature.....	2
1-3 System requirements	2
1-4 Package includes	3
 Ch2. Installation.....	 4
2-1 Hardware Installation	4
2-1-1 USB Box.....	4
2-1-2.PCI Card.....	5
2-2 Software installation	6
2-2-1 MyTeVii and driver installation.....	6
2-2-2 ProgDVB installation.....	11
2-2-3 TeViiData installation.....	15
 Ch3. Software Setting	 19
3-1 MyTeVii	19
3-2 ProgDVB	24
3-3 TeViiData	29
3-4 Remote control.....	33
 Ch4. Trouble Shooting	 35
4-1 FAQ.....	35

Ch1. TeVii Product Introduction

1-1 Introduction

The product is fully compatible for your PC / NB use & enables you to enjoy digital Radio and TV programs. Please read the instructions carefully before installation.

1-2 Feature

- DVB-S/S2 TV and radio program receiving on PC
- Real-time and Pre-Scheduled Recording (PVR)
- Time-Shifting
- HDTV S (MPEG2) / S2 (H.264 / AVC)
- DVB Electronic Program Guide (EPG)
- Transponder / satellite auto scan
- Teletext
- Subtitles
- DiSEqC 1.0/1.1/1.2 support
- Full screen display
- On screen display
- Remote control supported

1-3 System Requirements (Recommended Platform)

- 2.0 GHz CPU or above
- 256 MB RAM (required), 512 MB RAM (recommended)
- Sound card for audio / onboard sound chip
- One free USB2.0 port (USB model)
- CD-ROM / DVD-ROM (For driver & application installation)
- Windows XP Service Pack2 / Vista
- Microsoft Direct X 9.0 or above
-

1-4 Package Includes

- Digital TV PCI Card / USB Box
- Remote Control (With batteries)
- USB cable (For USB model)
- IR receiver cable (For PCI model)
- Power adapter (For USB model)
- Quick Installation Guide
- Software CD (Driver and Application Software)

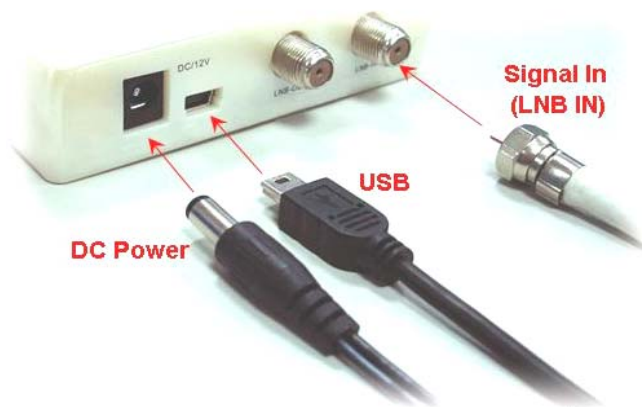
Ch2. Installation

2-1 Hardware Installation

2-1-1 USB Box

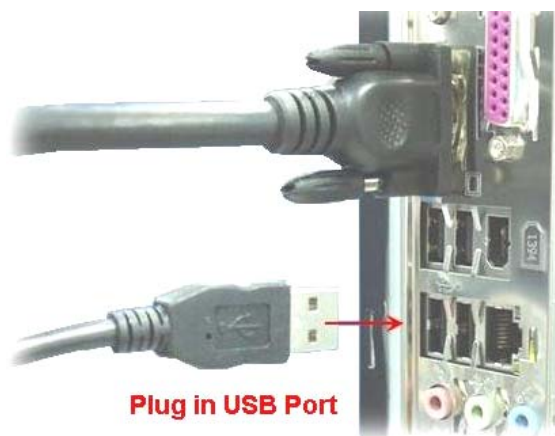
➤ Step 1:

Connect the signal cable (from LNB) & DC power to your digital TV product



➤ Step 2:

Connect USB Cable to the USB port on your PC



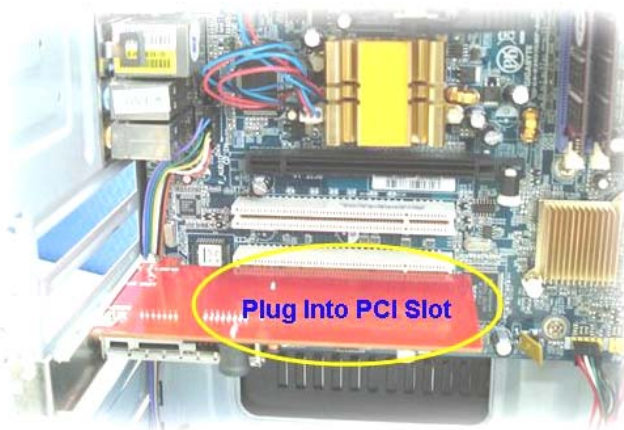
2-1-2.PCI Card

➡ Step 1:

Make sure the power of the computer and peripheral equipments are off

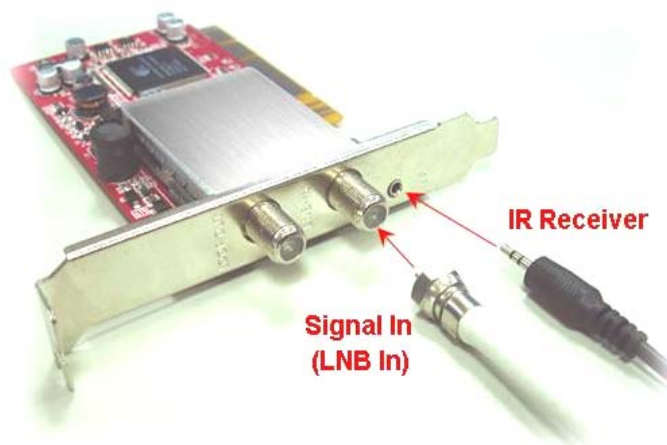
➡ Step 2:

Plug into PCI slot on your PC & lock the screw tightly of the bracket with the PC case



➡ Step 3:

Connect the signal cable & IR receiver cable to your digital TV card



2-2 Software installation

2-2-1 MyTeVii and driver installation

➤ Step 1:

When you insert PCI or connect USB Digital TV product to your PC.

“Found New Hardware Wizard” dialog will pop out; choose “No,,not this time” and click “Cancel”



➤ Step 2:

Insert the Drive CD into your CD-ROM, .TeVii Installshell will automatically start & follow window will appear. If the window doesn't appear, start TeVii Installshell from Drive CD manually. Click on “Install Driver & MyTeVii”.



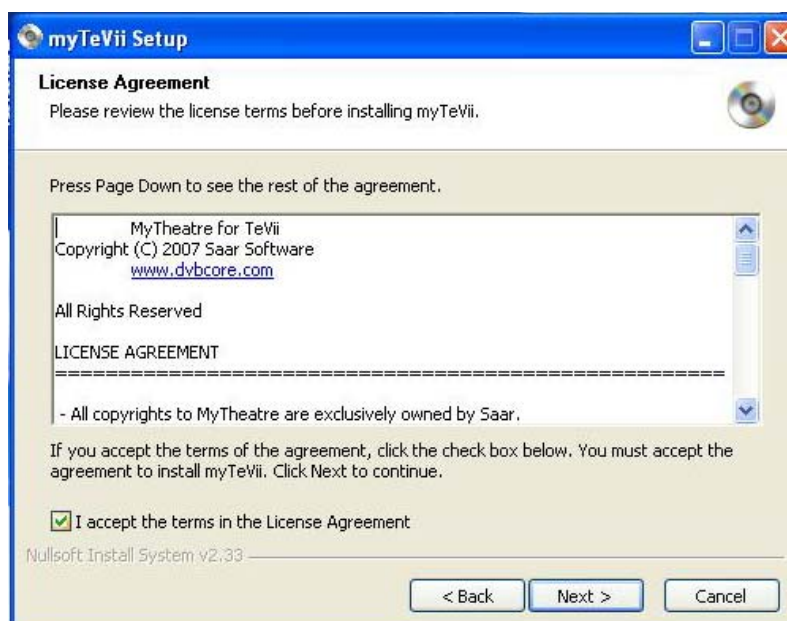
➤ Step 3:

Before installing MyTeVii, DVB device has to be installed/connected. For DVB-S models, myTeVii 3.XX will be installed; for DVB-S2 models, myTeVii 4.XX will be installed. To start software installation; press “Next” button on each installation step.

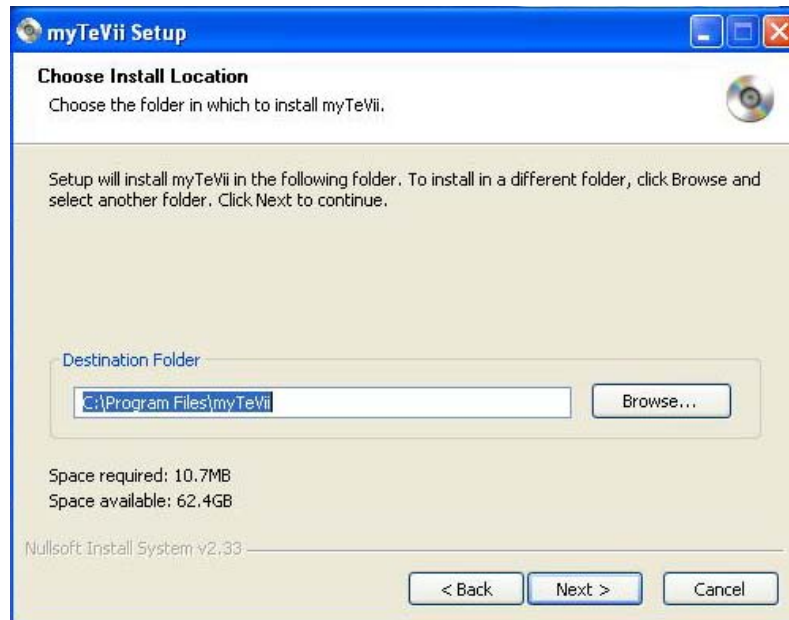


➤ Step 4:

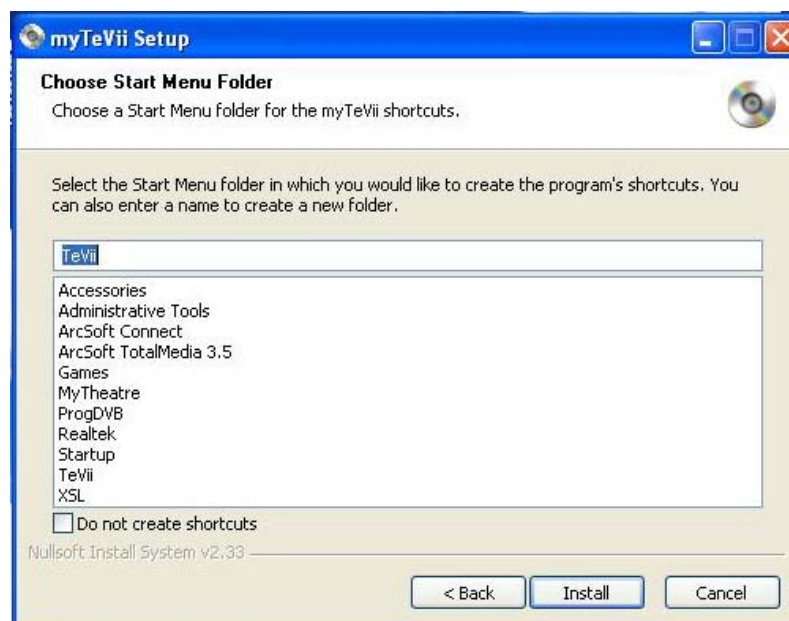
Mark "I accept....." and click "Next"



- ➡ Step 5:
Choose install location and click “next”



- ➡ Step 5:
Choose start menu folder and click "Install"



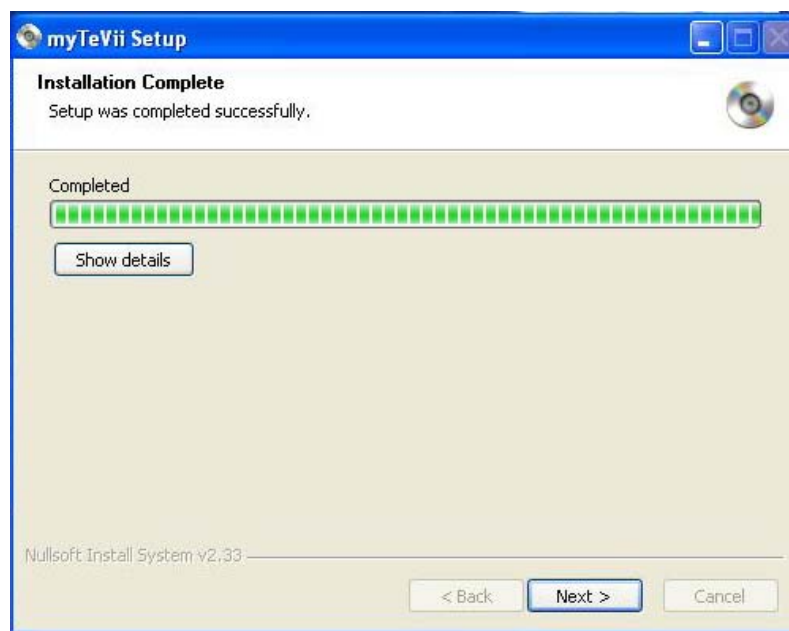
➡ Step 6:

Hardware installation, Please click “Continue Anyway”



➡ Step 7:

Installation complete, Please click “Next”



- Step 8:
- Completing myTeVii and driver setup, Please click “Finish”



2-2-2 ProgDVB installation

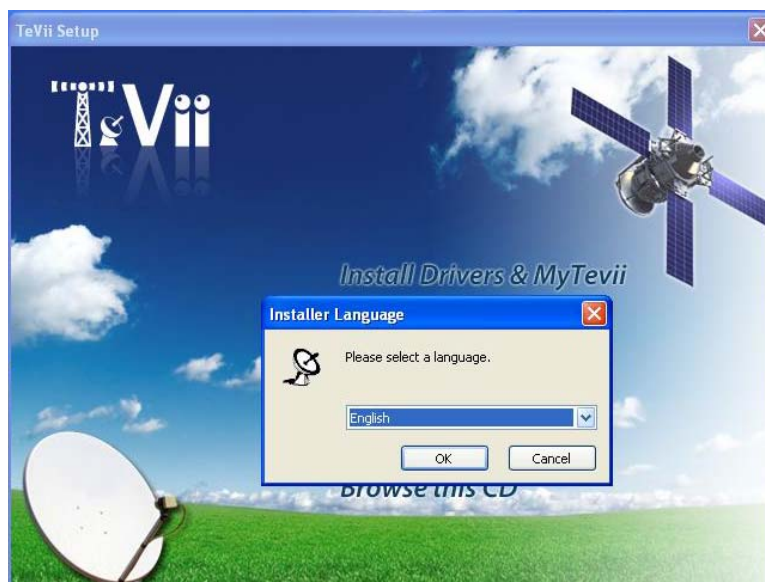
➡ Step 1:

Insert the Drive CD into your CD-ROM, .TeVii Installshell will automatically start & follow window will appear. If the window doesn't appear, start TeVii Installshell from Drive CD manually. Click on "Install ProgDVB".

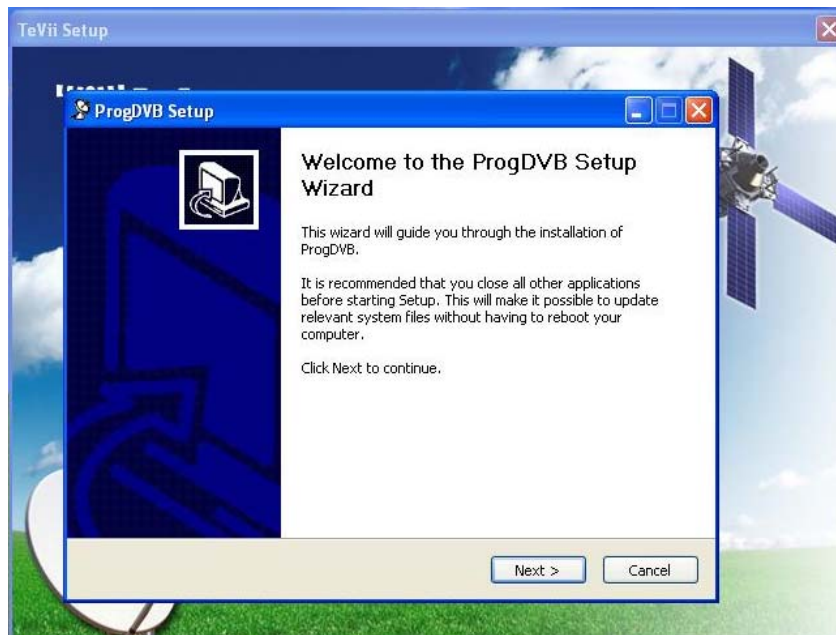


➡ Step 2:

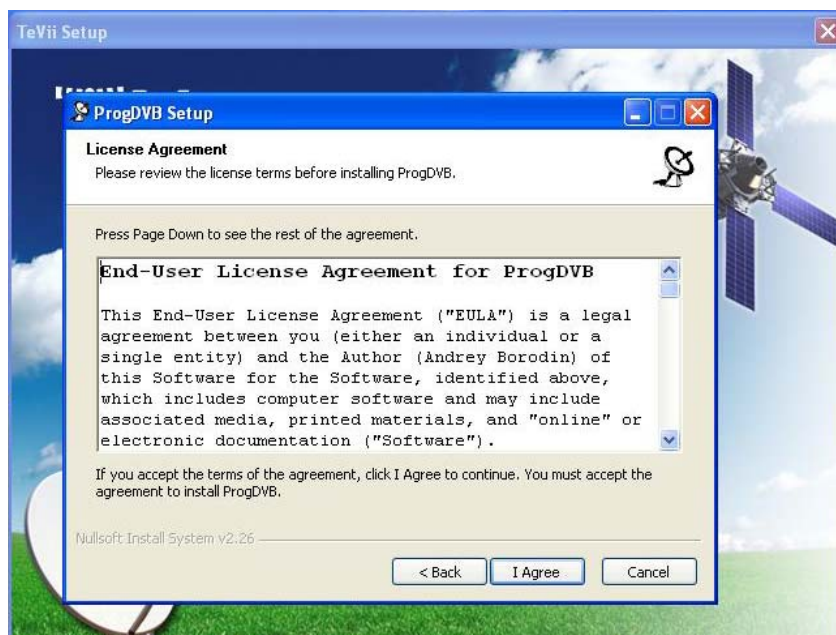
Please select your language and click "OK"



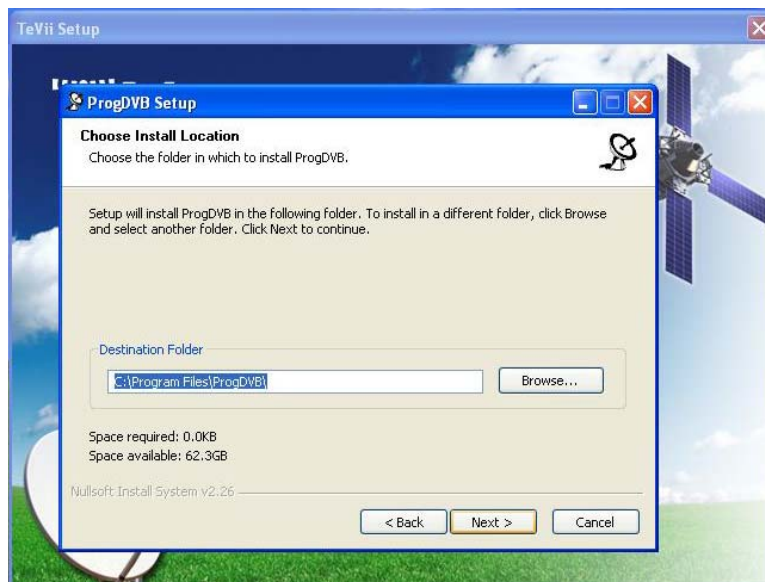
- ➡ Step 3:
- ProgDVB Setup, Please click "Next"



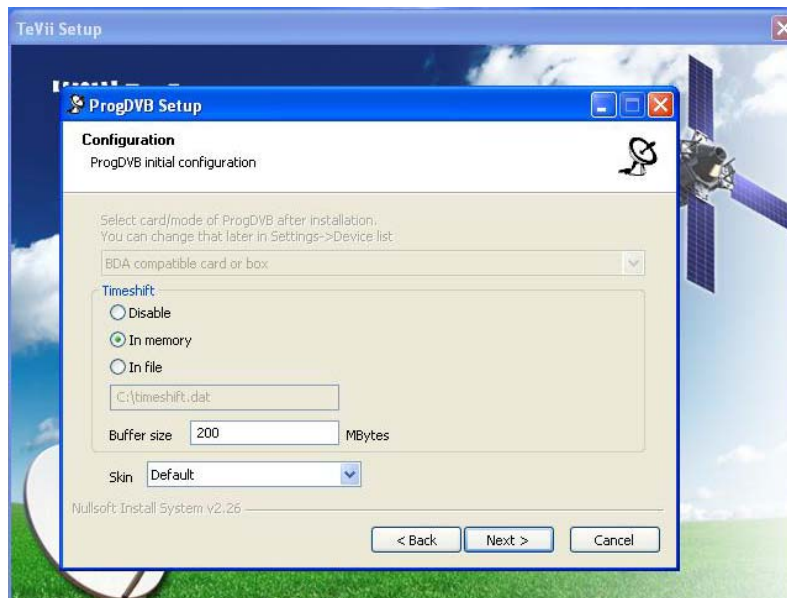
- ➡ Step 4:
- License Agreement, Please click "I Agree"



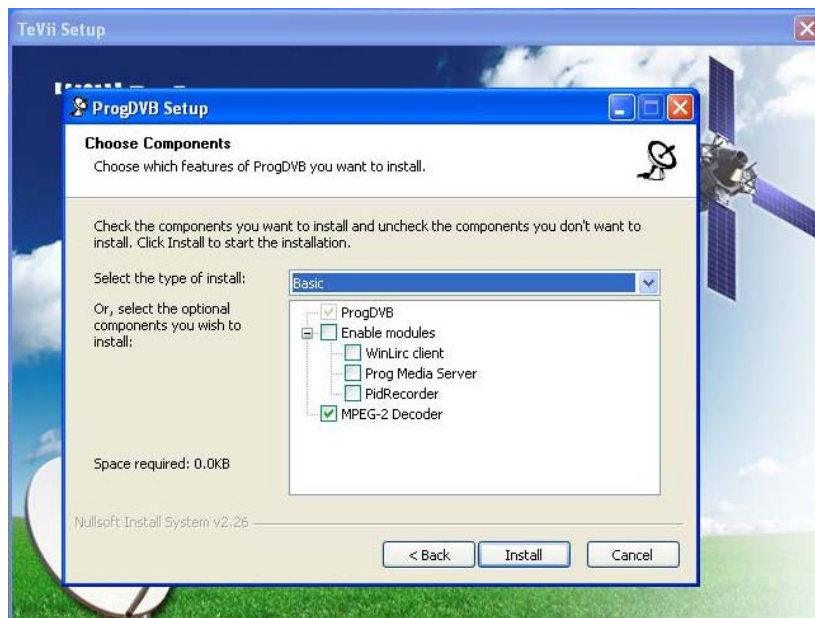
- ➡ Step 5:
- Choose path to install and click “Next”



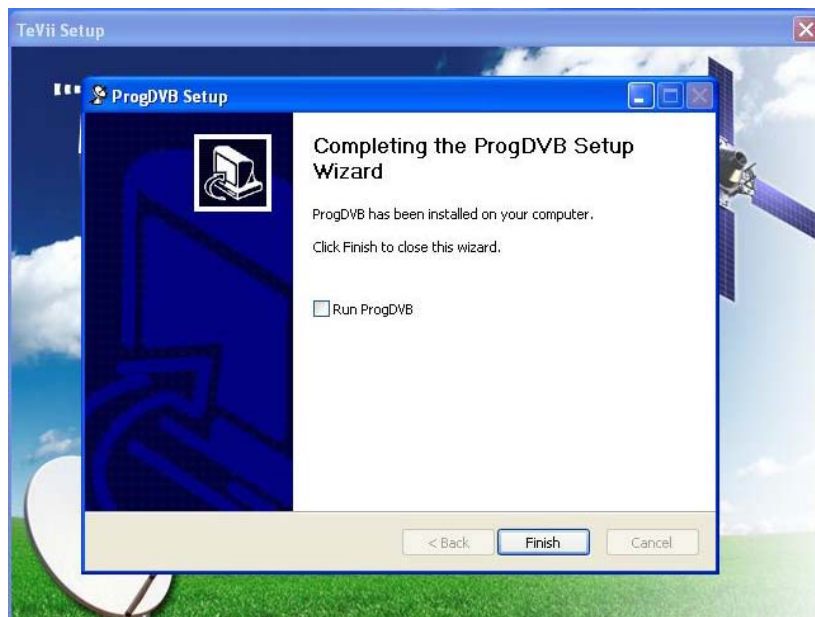
- ➡ Step 6:
- Please select ProgDVB default setting and click “Next”



- ➡ Step 7:
- Choose default setup and click “Install”



- ➡ Step 8:
- Installation completed, Please click “Finish”



2-2-3 TeViiData installation

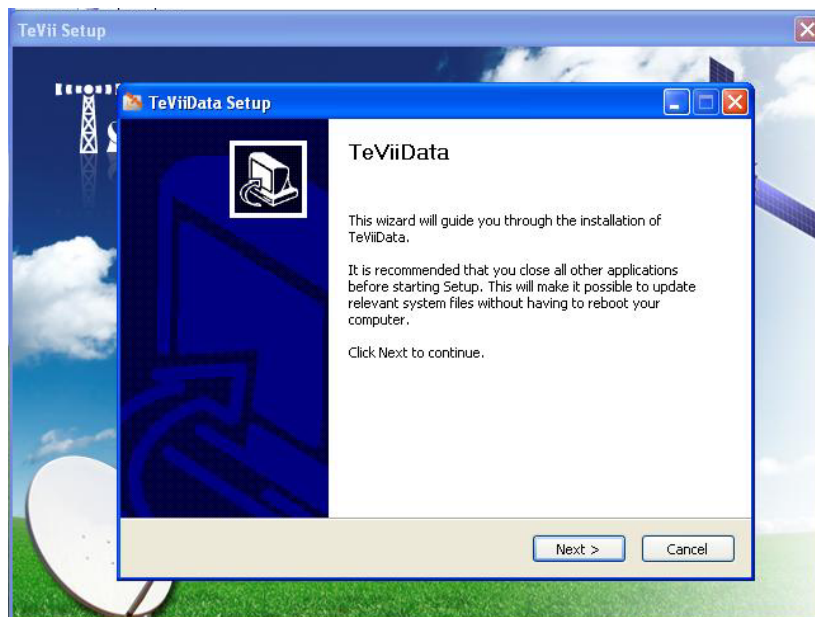
➡ Step 1:

Insert the Drive CD into your CD-ROM, .TeVii Installshell will automatically start & follow window will appear. If the window doesn't appear, start TeVii Installshell from Drive CD manually. Click on "Install TeViiData".

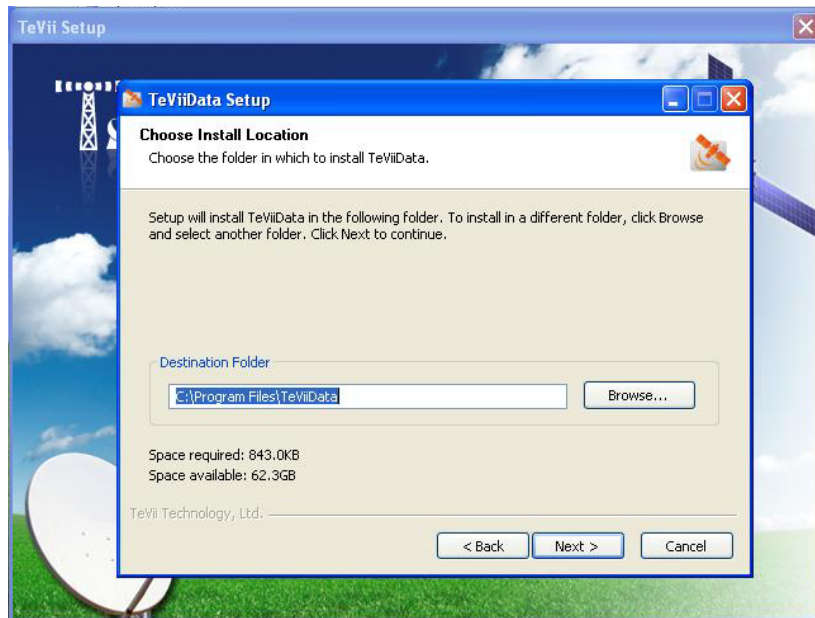


➡ Step 2:

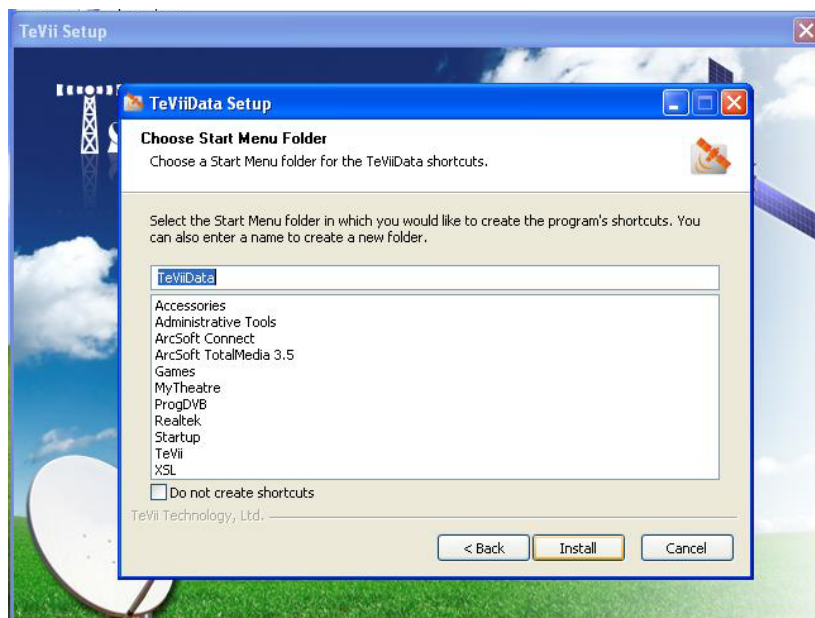
TeViiData Setup, Please click "Next"



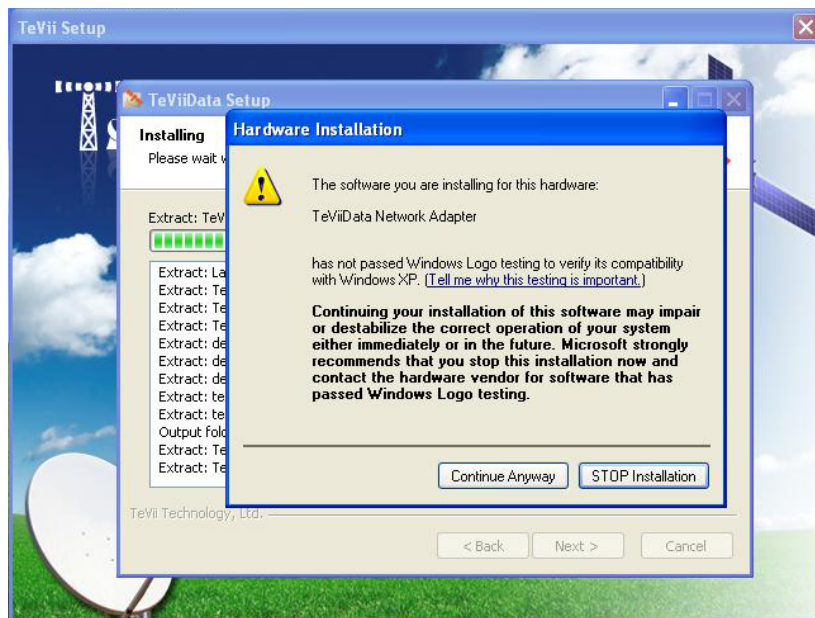
- ➡ Step 3:
- Please choose path to install and click “Next”



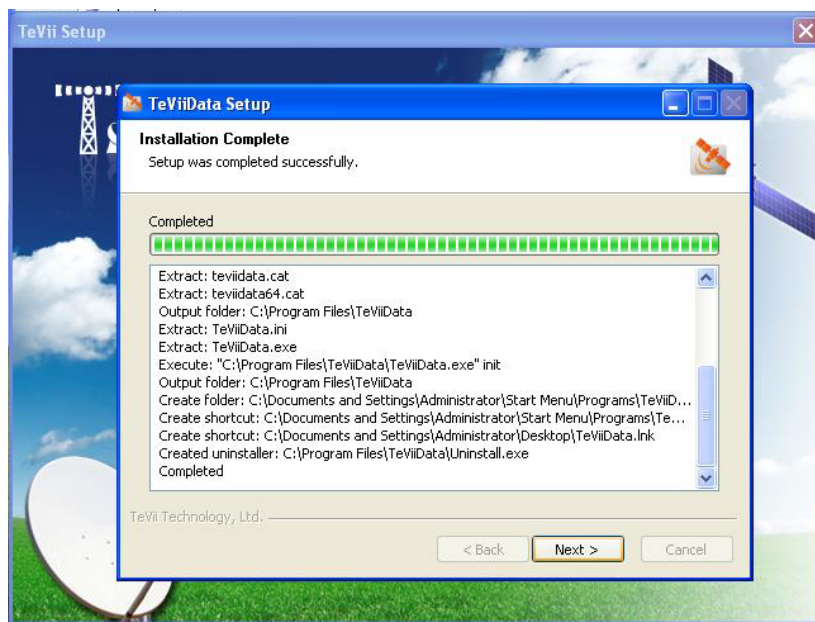
- ➡ Step 4:
- Choose start menu folder and click “Install”



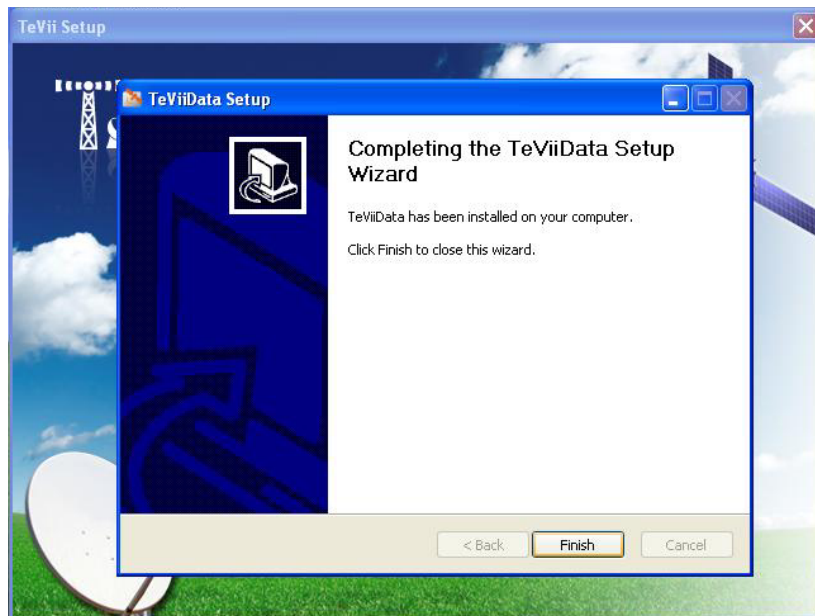
- ➡ Step 5:
TeViiData network adapter installation, Please click “Continue Anyway”



- ➡ Step 6:
Installation completed, Please click “Next”



- Step 7:
- Installation completed, Please click “Finish”



Ch3. Software setting

3-1 MyTeVii

➤ Step 1:

After installation finished, you will see myTeVii icon on your Desktop. Run it by double clicking the icon. Then you will see the name of your DVB card shown on the bottom of splash-screen.



MyTeVii icon on your desktop

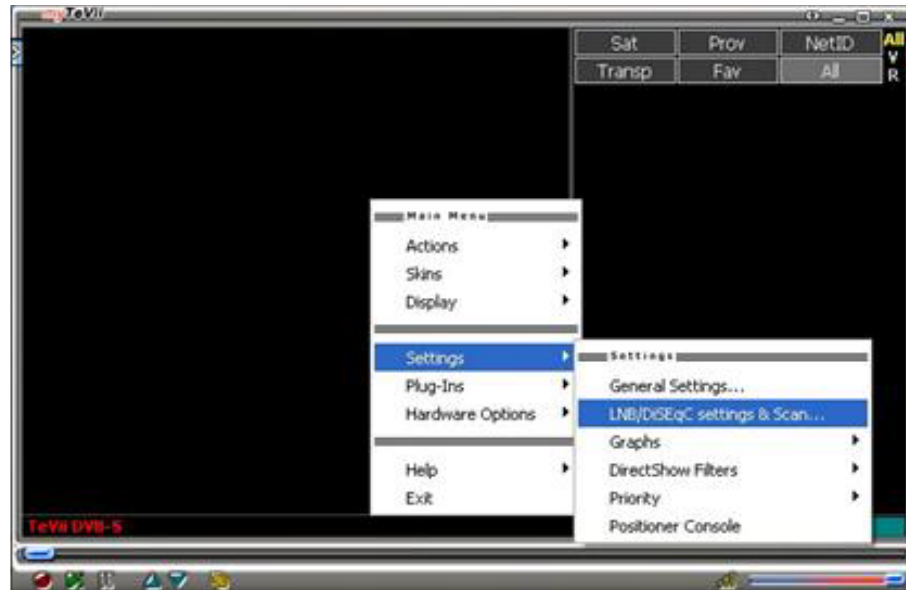


Note:

If you see "OFFLINE" on the screen, it means your card hasn't been recognized by your PC. Make sure you plug card into PCI/USB slot firmly and installed driver again.

➤ Step 2:

After splash-screen, you will see main window of application. Click on video area (at the first run it will look like large black area) by right mouse button. Pop-up menu appears. Follow menu: Settings ->LNB/DiSEqC settings & Scan...



➤ Step 3:

LNB/Transponders settings. you will see settings for satellites and transponders. Find and click on required satellite on list. Fill appropriate LOF1, LOF2, SW values. Please read instruction of LNB convertor you use. Don't forget to click on "Apply" button when you finish setup satellite LNB parameters.



Note:

If you see universal (dual-band) Ku LNB then usual parameters are:

LOF1=10600000, LOF2=9750000, SW=11700000. If you use DiSEqC switch or motor then click on DiSEqC button and choose appropriate LNB input port.

➡ Step 4:

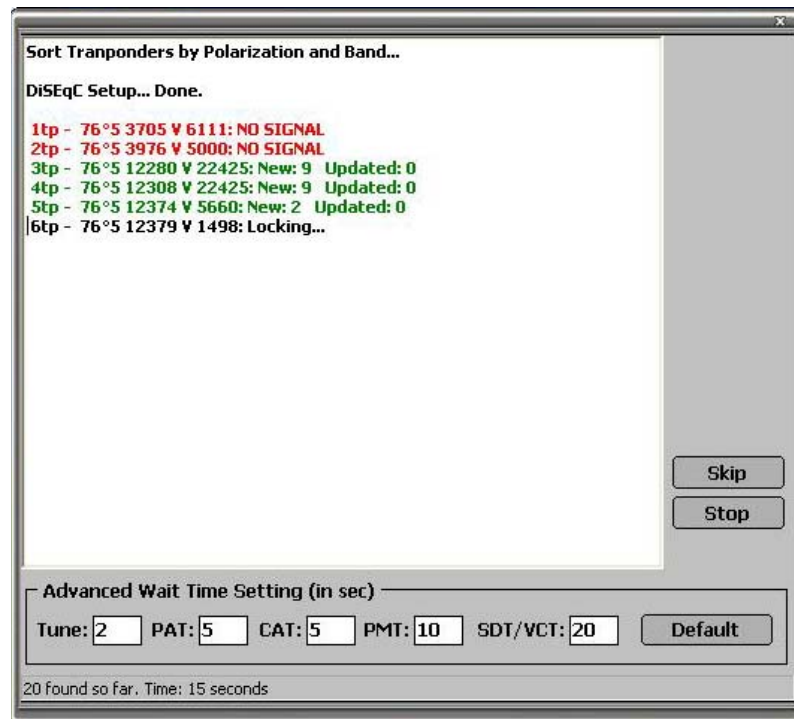
Click on button “Sel All” (right side of window) to select all transponders or while holding “Ctrl” key click sequentially on every transponder you want to scan. Click on button “-=SCAN=-” to start scanning process.



- ➡ Step 5:
- DiSEqC Switch Settings. Mark “First DiSEqC Switch” and choose Committed, LNB1..LNB4 (depend on required port of switch)

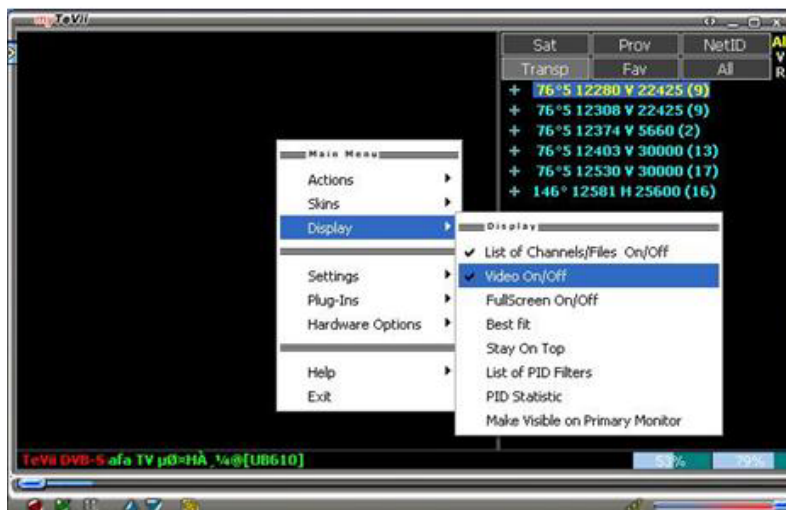


- ➡ Step 6:
- Scan Dialog: You can watch scanning process in this window. You may interrupt scanning by clicking “stop” button. After scanning completed, close scanning window and then LNB dialog.



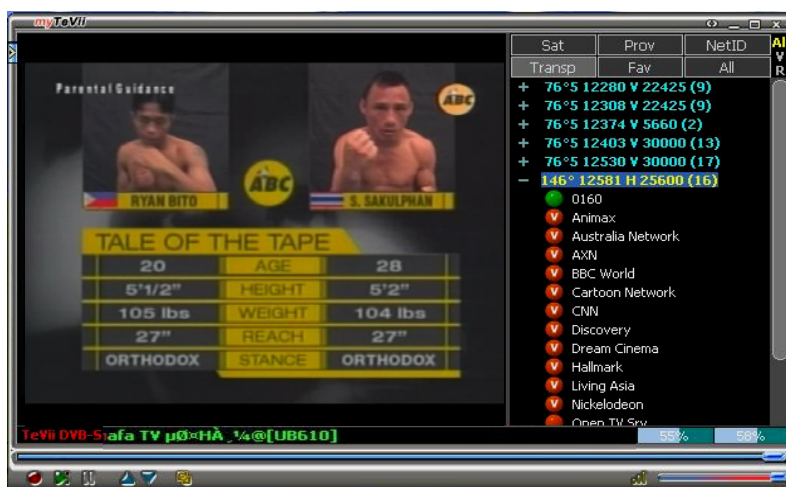
➤ Step 7:

Open pop-up menu by clicking right mouse button on main window, then follow steps below: Display -> Video On/Off. Make sure there is a mark sign on this option. If there is no such mark then click on it.



➤ Step 8:

Click on any channel name with green “V” sign. You may organize channel view by clicking on any of following buttons “Sat”, “Prov”, “NetID”, “Transp”, “Fav”, “All”



Three small buttons “All”, “V”, “R” can filter channels to show TV only, Radio only or all channels.

Note:

You may press second and third time on the same button to filter channels and show free-to-air only (green), encrypted only (red) or all (yellow)

3-2 ProgDVB

➡ Step 1:

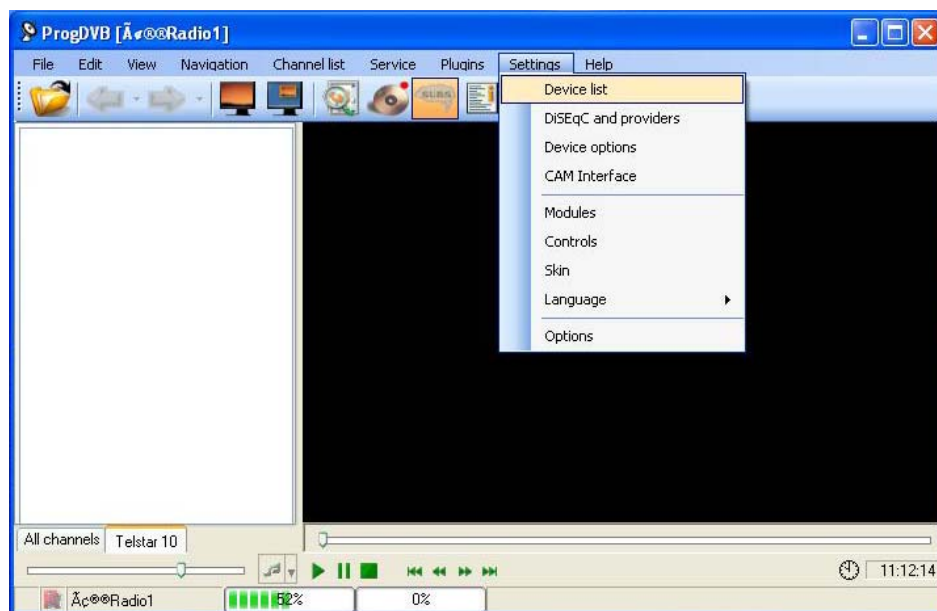
After installation finished, you will see ProgDVB icon on your Desktop. Run it by double clicking the icon.



ProgDVB icon on your desktop

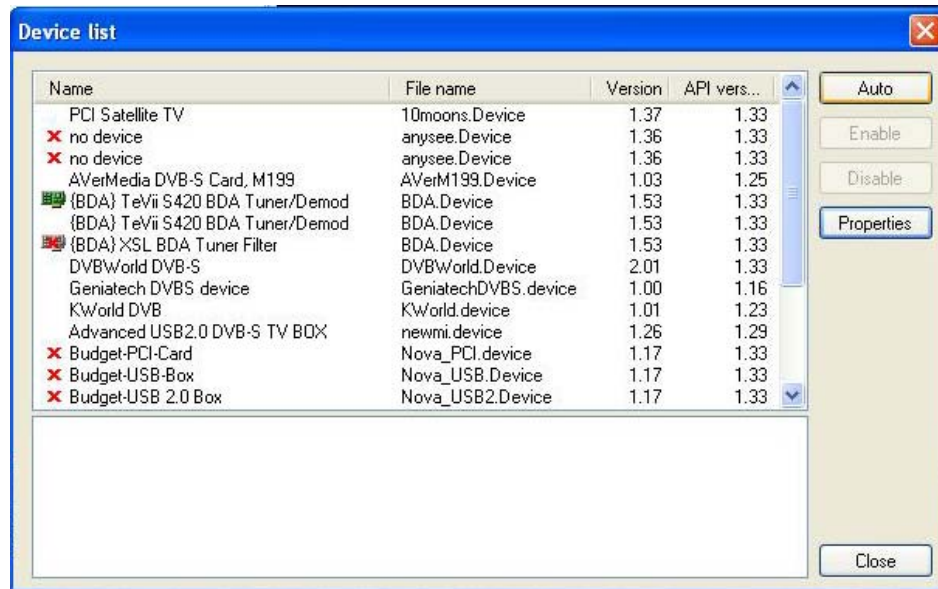
➡ Step 2:

After splash-screen, you will see main window of application. Move the mouse to "Settings", then enter "Device list" option to start scanning satellite



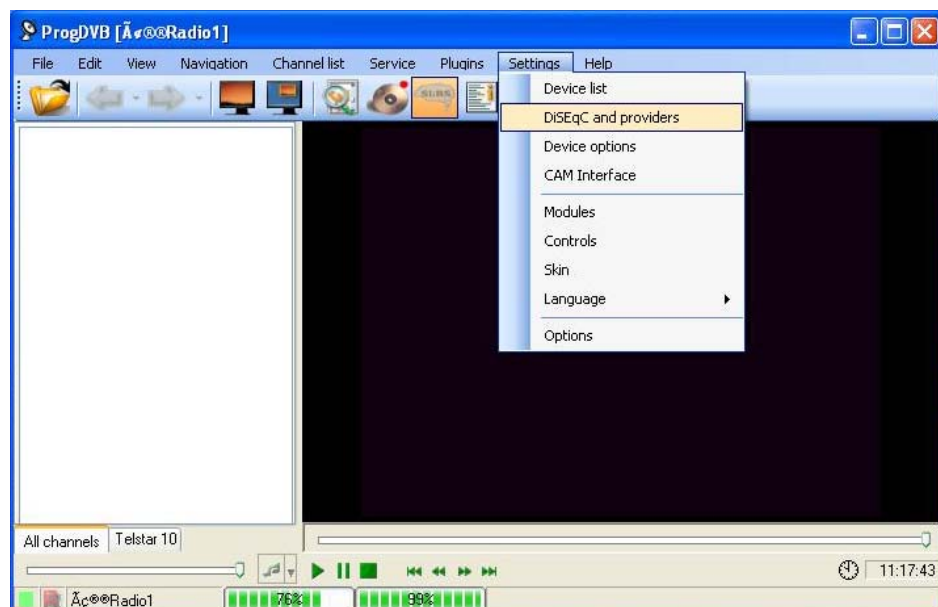
➤ Step 3:

Click "Auto", The software will automatically find the hardware you've install



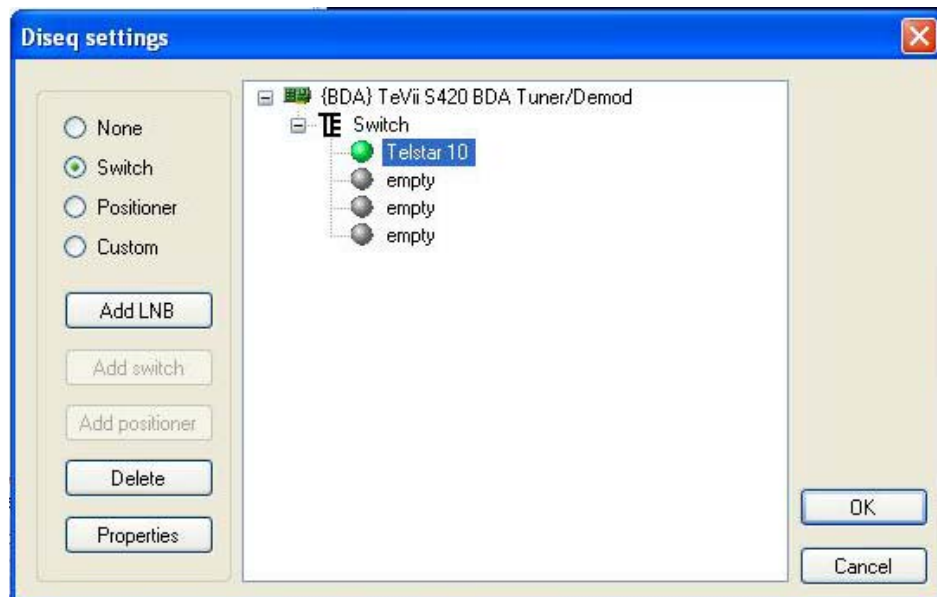
➤ Step 4:

Move the mouse to "Settings", then click "DiSEqC and providers" on the pull-down menu



➡ Step 5:

Please choose a satellite you like to scan and LNB type you are using and click “OK”, Repeat the step above for every switch if needed

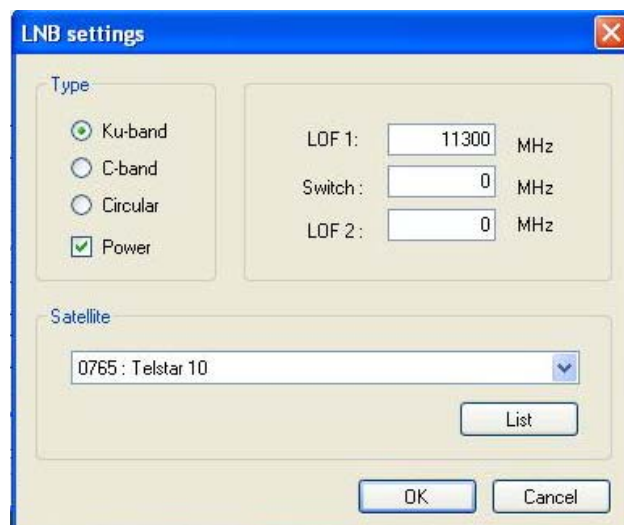


Note:

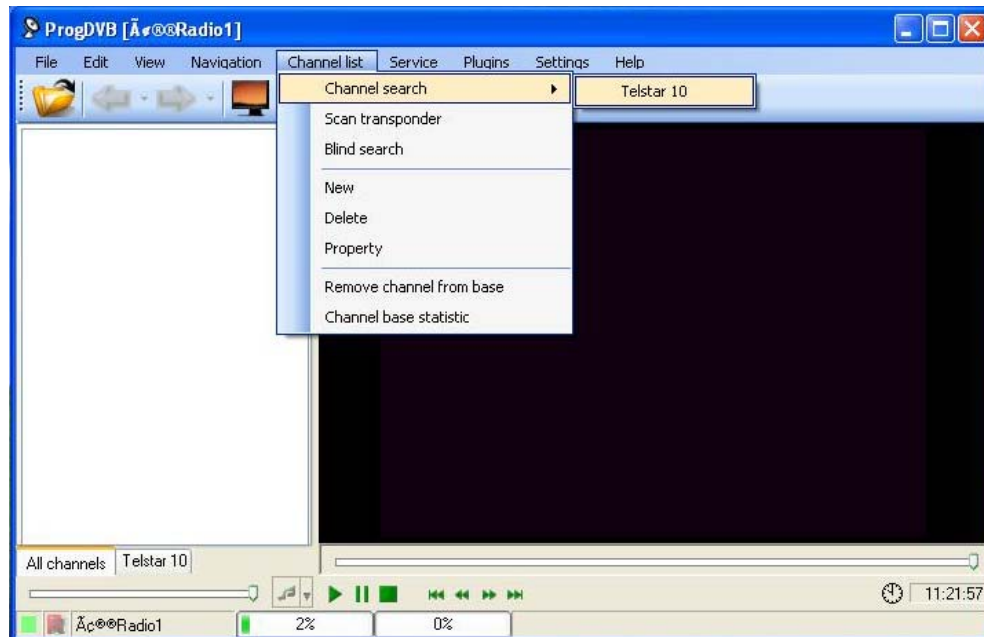
If you only have one dish and LNB without motor, you may choose “None”

➡ Step 6:

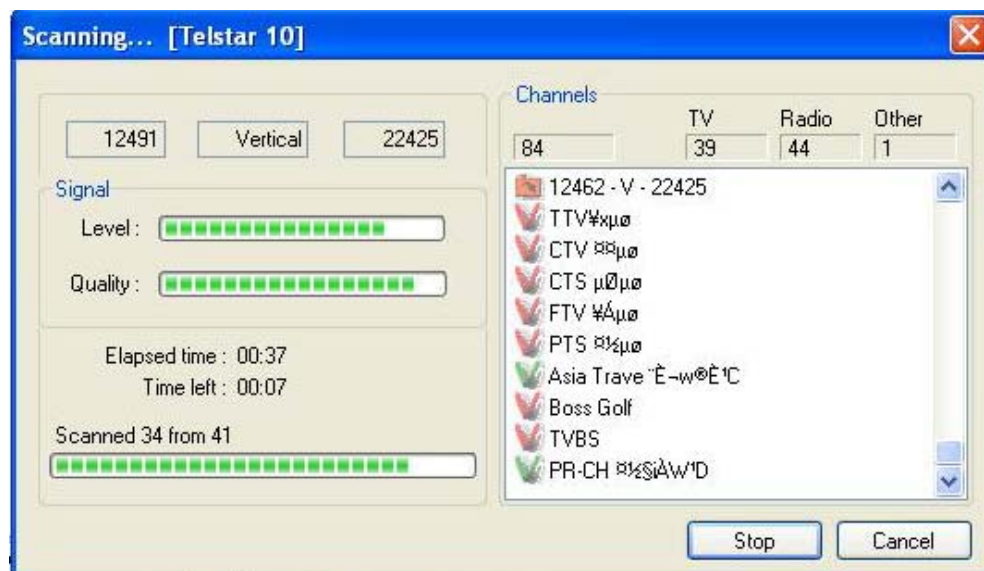
Please choose LNB type, you need to fill in the parameters for LOF 1 and LOF 2 and select satellite



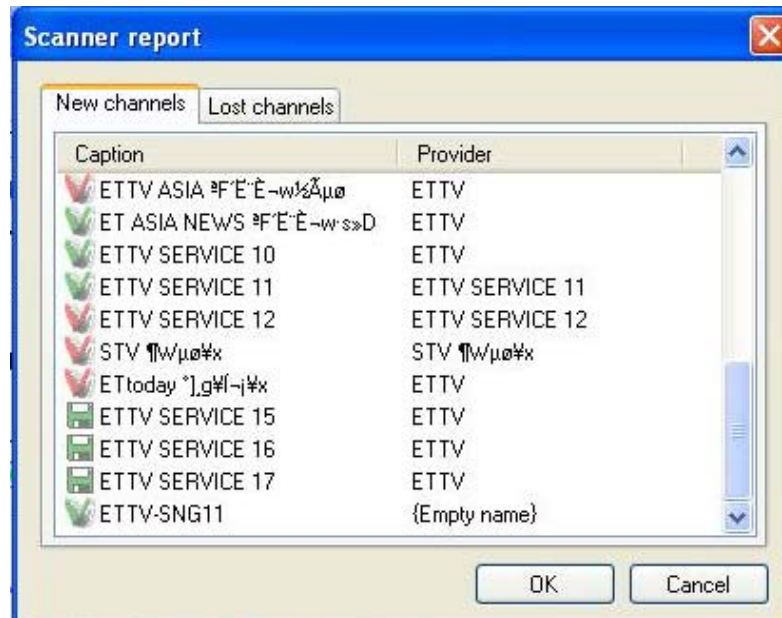
- Step 7:
- Move the mouse to "Channel list", then enter "Channel search" option and click your satellite



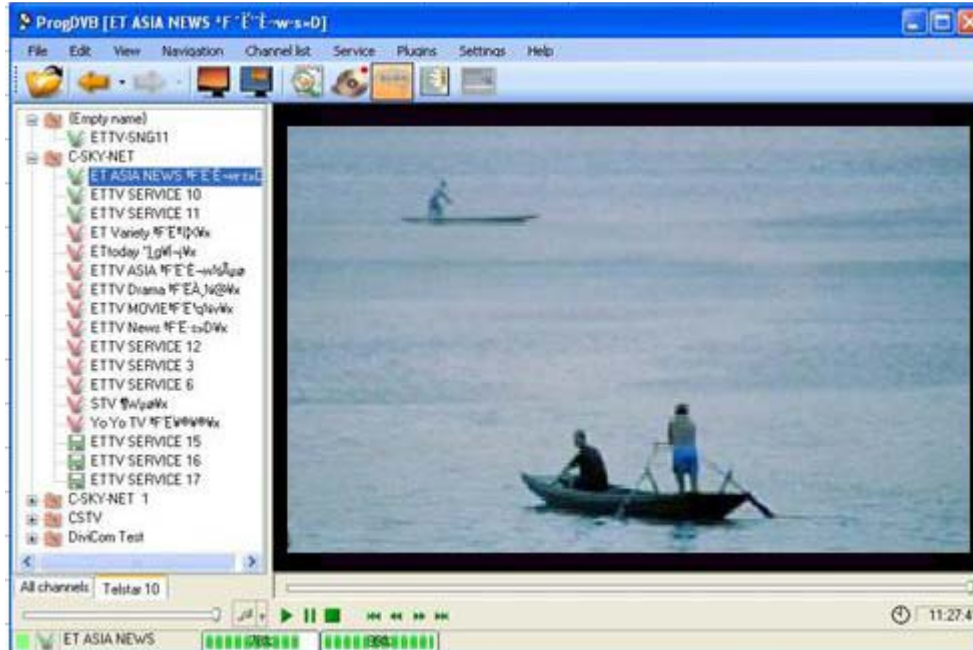
- Step 8:
- Scanning ...



- ➡ Step 9:
- Scanning finished, Please click “OK”



- ➡ Step 10:
- Click on any channel with green “V” sign to watch program



Notice:

For technical support & troubleshooting of ProgDVB, please visit www.progdvb.com for more information.

3-3 TeViiData

➡ Step 1:

After installation finished, you will see TeViiData icon on your Desktop. Run it by double clicking the icon.



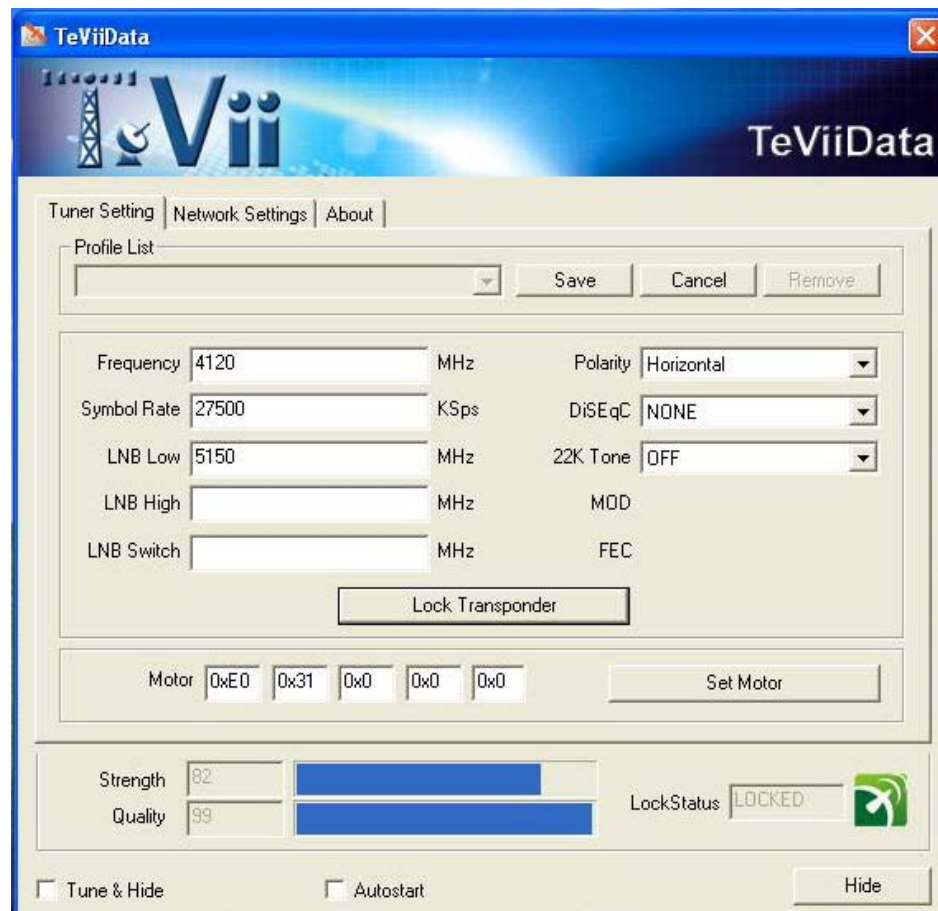
TeViiData icon on your desktop

➡ Step 2:

After splash-screen, you will see main window of application. Please click “New”



- Step 3:
- You need to fill in the parameters for your satellite,
For example: Frequency, Symbol Rate, LNB, Polarity, DiSEqC, 22K, and click
“Lock Transponder”

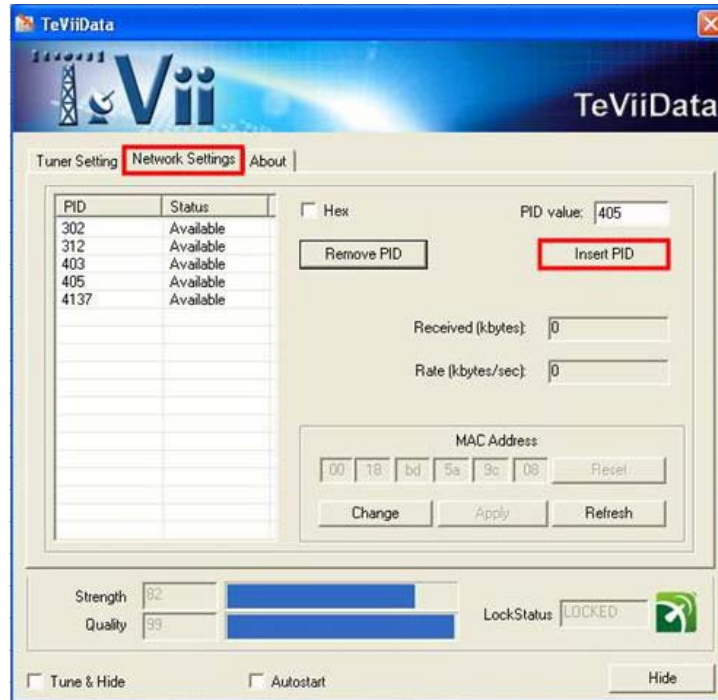


Note:

Once the transponder is locked, you will see Strength & Quality indicators in Blue bar and the LockStatus icon turns Green

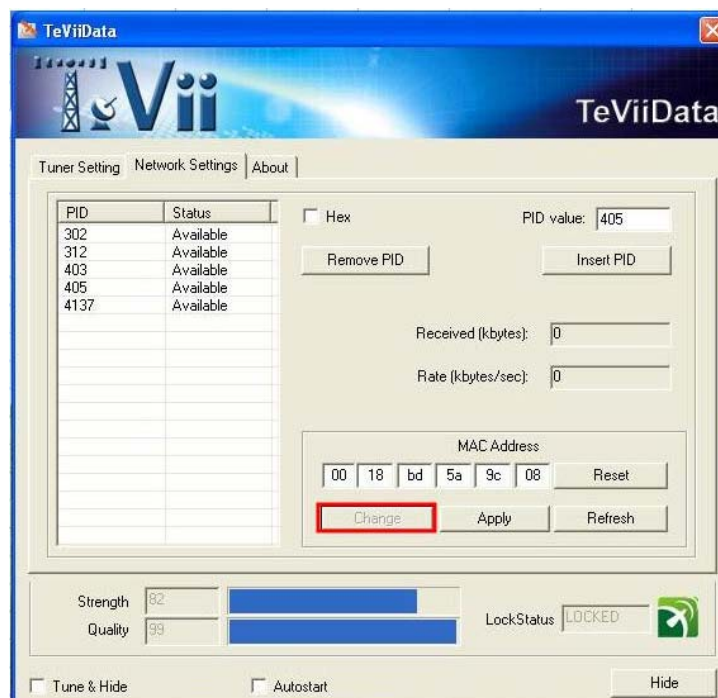
➡ Step 4:

Please click “Network Settings” into this page & Insert PID

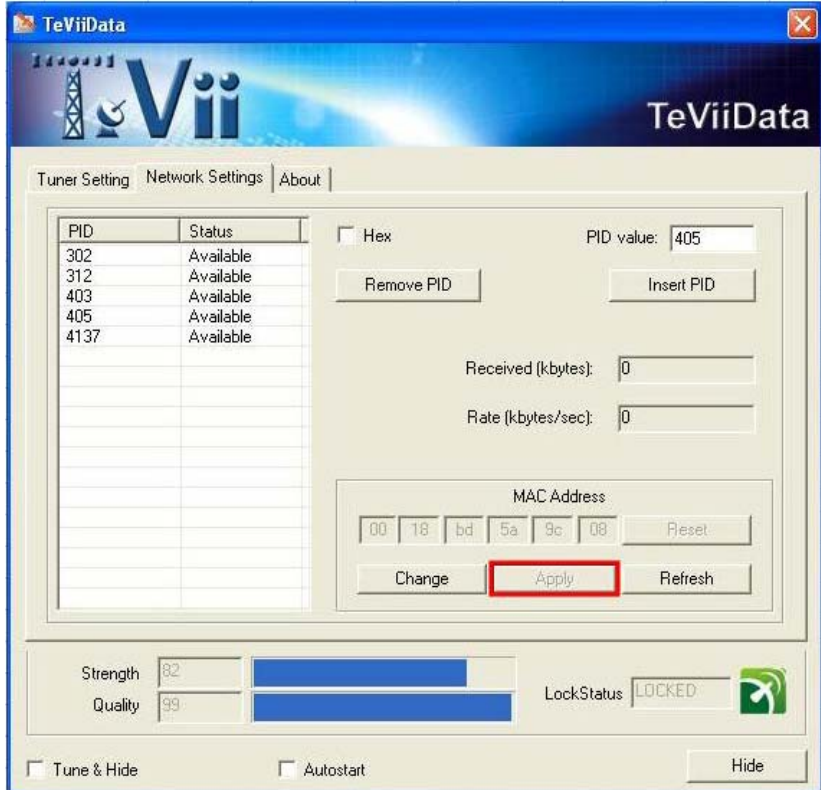


➡ Step 5:

TeViiData allows you to change MAC Address by yourself, Click “Change”, Enter the "MAC Address" you need in the column as below



When you finish all setup, don't forget to click "Apply"



Note:

TeViiData is a stable and easy satellite internet software, with which you could surf high speed broadband via satellite, but you need to apply for a valid account from your local Satellite Internet ISP before using TeViiData.

3-4 Remote Control

➡ The outlook of remote control and button definitions shown as below:



➤ Remote control keys definition

Key Name	Default Action	Live Mode	Play Mode	OSD	EPG Window	Channel List
Mute Power	Mute Exit					
1 2 3 4 5 6 7 8 9 0	1 2 3 4 5 6 7 8 9 0					
Recall Fav		Previous Channel OSD Favorites	OSD File List	Event Info	Show All/Current/Next Events	
Vol+ Vol- Channel+ Channel- Live Play	Vol+ Vol- Live Mode Play Mode	Channel+ Channel-	Next File Previous File	Category Up Category Down	Channel Up Channel Down	
Up Down Left Right OK Menu Back	Select OSD Menu Cancel	Channel+ (Same Fav) Channel- (Same Fav) Play Speed- Play Speed+		Up Down Left Right	Up Down Page Up Page Down	Up Down
Play/Pause >> << EPG Rec Timer Open Info A/B Audio Subs List Mon FS	Play/Pause Fast Forward Rewind Sleep Timer OpenFile OSD Info Next Monitor FullScreen	Show EPG Record Audio A/B/AB Switch Audio Subtitles on/off Show Channel List	 Switch Audio Show File List	Add To Scheduler (Watch) Add To Scheduler (Record)	Add To Scheduler (Record)	
F1 F2 F3 F4 F5 F6	Preset1 Preset2 Preset3 Preset4 Preset5					Satellite View Provider View Transponder View Favorites View All Channels

Ch4. Trouble Shooting

4-1 FAQ

➡ Windows cannot recognize TeVii card hardware correctly (for example: S420 or S460):

ANS: You may switch to a different PCI slot and try again, Please remove from PCI slot and change to another PCI slot and check that your PCI slot and PCI part of card are clean.

➡ Video can be played but Audio failed.

ANS: Please check the sound card setting or the volume setting.

➡ Why my EPG, Teletext and Subtitle cannot be shown?

ANS: At some areas, the broadcasters do not provide this kind of services . Please contact you broadcaster for further information.

➡ Why I can not lock any channels ?

ANS:

- Please check whether the dish points at the right satellite.
- Please check the cable between TeVii device and the dish are well connected.
- Please note that the cable should be connected to "LNB In" F-connector of the card.
- Set LNB power on to supply power to LNB. Please note that most LNB need power supply from the tuner.
- Check whether the voltage for LNB is correct. (18V-21V for Horizontal or 11V-14V for Vertical)
- Check the settings of satellite; for example, LNB frequency is for C band or Ku band.
- Please re-insert the TeVii device to another PCI slot or USB port again.